

**NORTHWEST RAPID TRANSIT
PROJECT INTEGRATED MANAGEMENT SYSTEM**

**STAKEHOLDER & COMMUNITY
INVOLVEMENT PLAN –
TALLAWONG STATION &
SYDNEY METRO TRAINS FACILITY**

FOR

**SYDNEY METRO NORTHWEST
OPERATIONS, TRAINS and SYSTEMS PPP**

DOCUMENT NUMBER:	NWRLOTS-NRT-PRD-PM-PLN-000879
NRT-PIMS NUMBER:	PIMS-SP-22/01
REVISION:	07
CONTROL STATUS:	Unmaintained unless stated otherwise



Stakeholder & Community Involvement Plan- Tallawong Station and Sydney Metro Trains Facility

Approval Record

FUNCTION	POSITION	NAME	SIGNATURE	DATE
Prepared by	Community Liaison Coordinator	Pais Cash		14 06 2018
Verified by	Stakeholder Relations Manager	Jodie Grant		14 6 18
Verified by	Communications and Stakeholder Liaison Manager	Deirdre McCue		14/6/18
Verified by	Communications and Sustainability Manager	Paul Dav es		18/6/18
Reviewed by	IMO Director	Ron Azzi		15/6/18
Reviewed by	Infrastructure Director	David Jackson		14/6/18
Reviewed by	Trains & Systems Director	Roger Ho		
Reviewed by	D&D Director	Malachy Breslin		21/06/18
Reviewed by	CEO MTS	Ronald Cheng Ivan Lei		22/6/18
Approved by	NRT CEO	Mark Elliott		26/6/18

Amendment Record

Changes made to this document since its last revision, which affect its scope or sense, are marked in the right margin by a vertical bar (|).

DATE	REV	AMENDMENT DESCRIPTION	BY	INITIALS
09/06/2015	01	First Biannual Review post OTS IC certification	Jodie Grant	JG
01/12/2015	02	Second Biannual Review post OTS IC certification	Jodie Grant	JG
17/5/2016	03	Third Biannual Review post OTS IC certification	Jodie Grant	JG
22/11/2016	04	Fourth Biannual Review post OTS IC certification	Deborah Metcalf	DM

DATE	REV	AMENDMENT DESCRIPTION	BY	INITIALS
17/05/2017	05	Fifth Biannual Review post OTS IC certification	Paris Cash	PC
27/11/2017	06	Sixth Biannual Review post OTS IC certification	Paris Cash	PC
01/06/2018	07	Seventh Biannual Review post OTS IC certification	Paris Cash	PC

Certification Record

DATE	REV	AMENDMENT DESCRIPTION	BY	INITIALS
27/04/2015	0 00	NWRLOTS-OIC-1NL-PM-CER-000013	OIC	OIC
01/07/2015	01		OIC	OIC
23/12/2015	02	NWRLOTS-OIC-1NL-PM-CER-000059	OIC	OIC
07/07/2016	03	NWRLOTS-OIC-1NL-PM-CER-000086	OIC	OIC
13/01/2017	04	NWRLOTS-OIC-1NL-PM-CER-000117	OIC	OIC
14/02/018	05	NWRLOTS-OIC-1NL-PM-CER-000161	OIC	OIC
	06	NWRLOTS-OIC-1NL-PM-CER-000	OIC	OIC



Table of Contents

1	About this sub-plan	1
1.1	Introduction	1
1.2	Outline of sub-plan	1
1.3	Site description	2
2	Management team structure	3
2.1	Key personnel	3
2.2	Community Place Manager – role and responsibility	4
3	Communication tools and key messages	6
3.1	Communication tools	6
3.2	Key messages	9
3.3	Training and induction	10
3.4	Crisis communications	11
4	Enquiries and complaints management	13
5	Stakeholder engagement	16
5.1	Approach	16
5.2	Implementation Plan	22
6	Evaluation and reporting	25
6.1	Monitoring and evaluation	25
6.2	Reporting	27
	Appendix A. Definitions	28
	Appendix B. Business Management Strategy	29
	Appendix C. Enquiry and Complaints Process	30

Table of Tables

Table 1	Communication tools and purpose	6
Table 2	Complaint and enquiry handling responsibilities	14
Table 3	Contact response times	14
Table 4	Local stakeholder and issue analysis and communication activities	17
Table 5	Indicative construction timeline	19
Table 6	Stakeholder and community liaison implementation plan	22
Table 7	Reporting methods	27

Table of Figures

Figure 1	Where this Plan fits in the hierarchy of communication plans	1
Figure 2	Enquiry Management Process	30
Figure 3	Complaint Management Process	31

1 About this sub-plan

1.1 Introduction

This *Stakeholder and Community Involvement Plan* is specific to the planning and construction of Tallawong Station and the Sydney Metro Trains Facility - SMTF (stabling and maintenance), at Rouse Hill and sits as a sub-plan to the *Community Liaison Implementation Plan* (CLIP) [[LINK PP22A-1.1-01](#)].

This sub-plan has been prepared in accordance with *the Sydney Metro Northwest Overarching Stakeholder and Community Involvement Plan* (OSCIP) [[LINK PP22A-1.1-02](#)] that outlines TfNSW's policies and instructions relating to stakeholder and community engagement, the Project's Conditions of Approval and the principles of best practice. The plans position in the hierarchy of communication plans is shown in Figure 1.

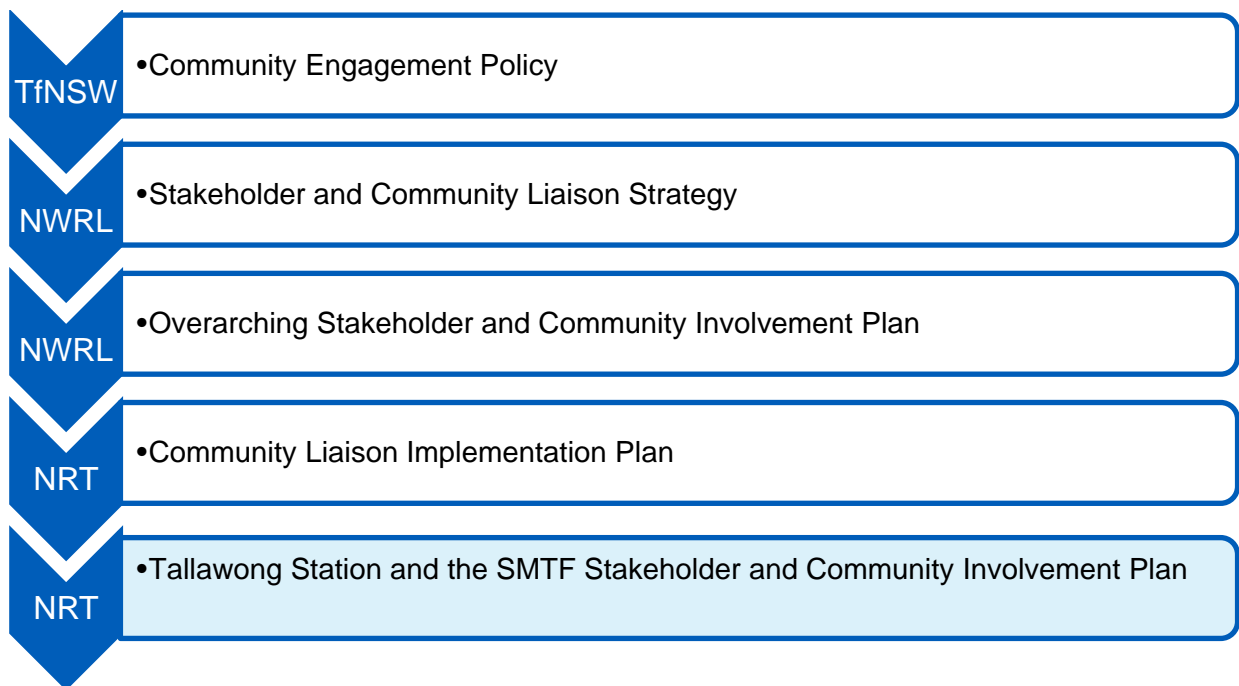


Figure 1 Where this Plan fits in the hierarchy of communication plans

1.2 Outline of sub-plan

This sub-plan includes:

- The community liaison management team structure, including key personnel
- A list of communication tools and procedures
- Enquiry, complaint and reporting procedures
- A draft outline program for the implementation of community liaison activities
- Key dates for the commencement and conclusion of construction activities



1.3 Site description

As part of the Project, a new station will be built near Cudgegong Road and the Sydney Metro Trains Facility (SMTF) will be constructed on the site bounded by Tallawong Road, Schofields Road, First Ponds Creek and Oak Street. The SMTF will be a specialised train stabling and maintenance facility supporting train operations when the project opens in 2019.

Tallawong Station is located slightly north of the intersection of Cudgegong Road and Schofields Road, Rouse Hill. The SMTF is located on a 35.48 hectare site, in an area that has been re-zoned for railway purposes and light industrial uses.

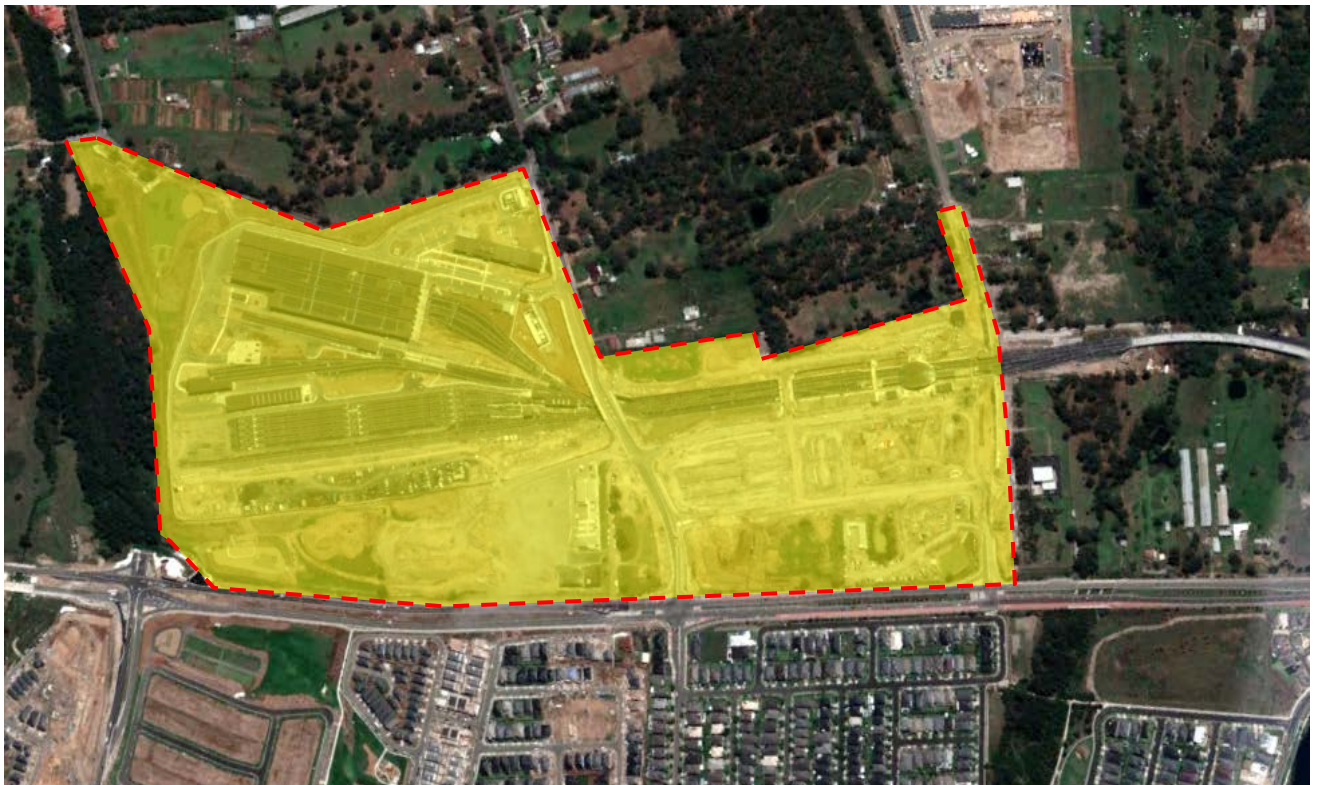
Cudgegong Road and Tallawong Road areas have been identified in two growth centre release precincts, Riverstone East (released in 2016) and Area 20 (re-zoned for urban development in 2011).

Areas bordering the site north of Schofields Road consist of predominantly semi-rural residential properties with some utilities infrastructure nearby. The properties are generally widespread on large acreages. Residential sub-division and construction continues on numerous properties in the area.

The Ponds housing estate has been established on the south side of Schofields Road. This is a densely populated residential estate with new developments continuing to be established to the west, along Schofields Road.

Roads and Maritime Services work to upgrade and widen Schofields Road continues and is expected to be complete by mid-2018.

There are no businesses near the station or stabling facility and nearest sensitive receivers are the Rouse Hill Anglican College on Rouse Road and the Lankarama Buddhist Vihara on Oak Street.



2 Management team structure

2.1 Key personnel

The communications and community relations structure has been developed to ensure coordination of project information and engagement activities and provide the flexibility to identify issues and respond to community and stakeholder expectations.

Responsibility for positive community engagement and stakeholder relationships will be driven across all functional areas with strategic advice and guidance provided by the Community Place Manager.

Across the Project, Community Place Managers are embedded in the construction teams with reporting lines to the relevant Project Managers. These roles are the primary contact for local stakeholders and will provide advice to site teams and contribute to the planning of activities to minimise community impacts.

They also have a reporting line to the Stakeholder Relations Manager to provide consistency in best practice engagement across the project. The Stakeholder Relations Manager is responsible for stakeholder and community engagement across all precincts and provides support to the Community Place Manager related to site specific management of community liaison issues and stakeholders.

The Community Place Manager assigned to SMTF and Tallawong Station sites will be responsible for community and stakeholder engagement within the area.



2.2 Roles and responsibility

Stakeholder Relations Manager

Role	Lead and manage the Stakeholder Relations team to provide proactive management and co-ordination of stakeholder engagement and consultation activities
Responsibilities	<p>Establish and maintain positive relationships with key project stakeholders</p> <p>Understand and comply with the Sydney Metro Northwest communication and consultation requirements and processes</p> <p>Collaborate with IJV functional teams to ensure stakeholder and community requirements and opportunities are integrated into the delivery program and activities</p> <p>Primary contact for businesses and sensitive stakeholders</p> <p>Provide strategic guidance to the Community Place Managers and Community Liaison Officers</p> <p>Manage the OTS enquiries and complaint management system and review all complaint reports to identify recurring issues and opportunities for improvement</p> <p>Monitor and report on consultation activities, status and issues</p> <p>Chair meetings with stakeholders and the community and provide details of the Project activities and progress</p>
Authority	Appointed by the Communications and Stakeholder Relations Manager
Lines of communication	<p>Reports to the Communications and Stakeholder Relations Manager</p> <p>Coordinates with TfNSW's OTS Contract Liaison Officer on stakeholder issues</p>
Minimum skill level	An experienced community relations professional with at least 7 years of experience in the management of community liaison, consultation and communications in projects with significant community interest
Interface with overall project structure	Interface with Operations, Engineering and Controls functions

Community Place Manager

Role	Accountable for stakeholder and community relations advice and activities associated with their nominated precinct
Responsibilities	<p>Engage with precinct community and stakeholders regarding the project, respond to complaints and enquiries, and identify issues and opportunities and recommend appropriate strategies</p> <p>Provide advice to project site teams and contribute to the effective planning of site activities to minimise impacts</p> <p>Record and report all stakeholder and community contact within Consultation Manager</p> <p>Write notifications, newsletters and community updates</p> <p>Arrange precinct community and business forums, site visits and local inductions in relation to community and stakeholder issues</p>
Authority	Appointed by the Communications and Stakeholder Relations Manager

<p>Lines of communication</p>	<p>Reporting lines to the Project Manager and Stakeholder Relations Manager Coordinates with TfNSW's OTS Contract Liaison Officer on stakeholder issues</p>
<p>Minimum skill level</p>	<p>A community relations practitioner with at least 5 years of experience in stakeholder management, community liaison, consultation and communications in similar roles</p>
<p>Interface with overall project structure</p>	<p>Interface with precinct based Operations, Engineering and Controls functions and weekly meetings with Communications and Stakeholder Relations team</p>



3 Communication tools and key messages

3.1 Communication tools

The following communication tools will be utilised during Project delivery.

The application of these tools to specific consultation and/or communication activities and opportunities will be determined in consultation with TfNSW.

All public communication material must be consistent with the Sydney Metro Northwest Style Guidelines and be approved by TfNSW prior to its release. TfNSW will be given five business days to review and approve all public communication material.

Table 1 Communication tools and purpose

Tool	Purpose	Responsibility
Community contact tools		
24 hour Community information line 1800 019 989	1800 number provides access to the project team during construction. Number to be publicised on all communication materials. Details of complaints are reported to TfNSW, the Environmental Protection Agency and the Environmental Representative.	TfNSW NRT 24/7 on-call roster to respond to complaints
Community email address	trains@metronorthwest.com.au allows communication with the Project team, as well as facilitating community feedback. The email address will be included on all communication materials.	TfNSW
Community post box	Postal address Sydney Metro Northwest, Level 1, South Building, 22 Giffnock Avenue, Macquarie Park, NSW, 2113 allows stakeholders to access the project team in writing. Communication materials to include postal address.	TfNSW
Information tools		
Quarterly newsletters	Site-specific quarterly construction update newsletters provided to the community, including the status of current and upcoming activities for each construction site e.g. progress of construction; planned activities; achievements; community involvement; community contact details; and relevant photos, maps and other illustrations.	NRT
Monthly stakeholder email updates	Email updates for each construction site providing targeted information to stakeholders. Email updates will be used to supplement, not replace, newsletters and notifications. Stakeholders and the community can register to receive these updates. Distribution lists managed on Consultation Manager database.	NRT
Photography and videography	Photographs and videos used to record the construction process. take and provide TfNSW with time-lapse photography of the construction site, suitable to upload to the website	NRT

Tool	Purpose	Responsibility
Site signage and hoarding banners	Site signage used to identify the project, provide contact information and explain why the project is needed. Signage to advise of activities that could potentially impact stakeholders, for example, changes to pedestrian routes and traffic conditions	NRT
Fact Sheets	Used to explain key aspects/issues of the project	NRT
Online tools		
Sydney Metro Northwest Website	TfNSW Sydney Metro Northwest website – www.sydneymetro.info will be referenced in all communication materials as a source of information and will be updated throughout the life of the Sydney Metro Northwest project. NRT to provide copies of advertisements, traffic alerts, notification letters, and other public material related to Project activities that has been published or publicly distributed	TfNSW
NRT Webpage	Information provided to comply with the Minister’s Conditions of Approval. NRT will provide a link to the Sydney Metro Northwest website on this webpage.	NRT
Social media	TfNSW to set up social media pages for each NRT site NRT to manage sites and provide one update per site per day or as requested by TfNSW	TfNSW NRT
Face-to-face and interactive tools		
Community information sessions	Held to provide information and updates about the project. Sessions also used to explain the current stage of construction and what the community can expect. NRT to attend community information sessions as required and requested by TfNSW	TfNSW NRT
Community forums	Four forums to be held across the project per year. For residents and community groups within 500 m of construction sites. Focus on key environmental management measures, construction updates, final design and operations	NRT
Business forums	Four forums to be held across the project per year. For businesses within 500 m of construction sites. Focus on key environmental management measures, construction updates, final design and operation	NRT
Mobile engagement	Provide information about the Project within local neighbourhoods and streets. Make Project team available and accessible to the community in an informal setting i.e. local coffee mornings	NRT
Doorknock meetings	Used to discuss potential impacts of the Project on highly impacted stakeholders, especially residents and businesses directly impacted by construction activities. Written project information updates provided to those who are not home.	NRT
Meetings with individual/groups	Discuss project activities, including work in progress, upcoming activities and any issues associated. Meetings will also be used to discuss potential impacts and any proposed mitigation measures.	NRT



Tool	Purpose	Responsibility
Site visits	To inform select stakeholders about the Project's progress and any key milestones or activities taking place. At least four on-site community events will be held every year	NRT
Presentations and forums	To inform stakeholders about the progress of the project and any key milestones or activities being carried out. Collateral for forums and presentations will be developed and suitable project personnel will attend and/or participate as requested.	NRT
Community events	Project team will identify opportunities to participate in or provide information at local community events.	NRT
Notifications		
Emergency works notification	Written and verbal notification to properties immediately adjacent to or impacted by emergency works. For any emergency work, notifications will be delivered by doorknock within two hours of commencing the work	NRT
Seven day notification letter	Notification letters provided at least seven days prior to the start of any activity likely to impact stakeholders, residents and businesses Activities may include: <ul style="list-style-type: none"> - Construction commencement - Significant milestones - Changes to the scope of work - Night works - Changes to pedestrian/cycle access and bus stops - Out of hours work - Disruption to residential or business access - Changing or disrupting utility services - Investigation activities Information provided includes: the scope of work; work locations; hours of work; duration of activity; type of equipment to be used; likely impacts; and relevant contact information.	NRT
Community signage – 7 day notification	Signage that identifies changes to traffic and access arrangements 7 days before: <ul style="list-style-type: none"> - Making changes to pedestrian routes - Impacting on cycle ways - Changing traffic conditions - Disrupting access to bus stops 	NRT
Advertisements	Advertise prior to significant construction activities, to notify of events and announce project milestones	NRT
Briefings and media		
MP briefings	NRT will participate in MP briefings if requested by TfNSW	TfNSW
Media briefings	NRT will participate in media briefings and events if requested by TfNSW	TfNSW

Tool	Purpose	Responsibility
Schools		
School education program	NRT will participate in the school education program developed for primary and high school students by the NWRL team, as requested	TfNSW
Traffic communication		
Signage – 7 day prior	Informational or directional signage at the location of the traffic change to give advice to road users and pedestrians on duration of change or alternative paths	NRT
Traffic alerts – 7 day notification	Communication to transport operators and emergency services to advise of traffic changes including road or lane closures and detours	NRT
VMS signs	Electronic variable message signs providing advanced notice to road users of traffic changes	NRT
Advertisement	Advertise prior to major changes in traffic conditions	NRT
Management		
Site inductions/ tool-box talks	Used to present information about the Project’s communication and stakeholder and community liaison requirements and obligations. Relevant hand-outs will be provided	NRT

3.2 Key messages

Key messages will be updated and tailored accordingly as the Project progresses. Key messages specific to the SMTF are:

- Sydney's new metro trains will be maintained at the purpose-built state-of-the-art Sydney Metro Trains Facility, to be built near the end of the Sydney Metro Northwest at Tallawong Road.
- The metro system will also be operated from here at a new state-of-the-art Operations Control Centre, the nerve centre of the new network.
- At all times, a team of expert train controllers will monitor the system, making sure everything runs smoothly.
- The nerve centre of the new rapid transit network will control and monitor all aspects of the new fully-automated system.
- The Sydney Metro Trains Facility will have facilities for stabling, cleaning and washing trains as well as train maintenance.

The following key messages developed for NRT will be updated and tailored accordingly as the Project progresses.

- The \$8.3 billion Sydney Metro Northwest is the first stage of Sydney Metro - Australia’s biggest public transport project currently under construction and a priority infrastructure investment for the NSW Government.



- The Sydney Metro Northwest will be delivered as part of Sydney's Rail Future – a customer-focused plan to modernise our trains.
- Over the coming decades, an extra 200,000 people will move into the region, taking its population above 600,000.
- New automated single deck trains will deliver a fast, safe and reliable service.
- There will be no need for a timetable – customers will just turn up and go, with a train every four minutes in the peak.
- The project includes 15km of tunnels between Bella Vista and Epping, a 4km skytrain viaduct section and the conversion of the existing Epping to Chatswood rail link to the new metro system.
- Northwest Rapid Transit (NRT) is delivering eight new railway stations, 4,000 commuter parking spaces and Sydney's new generation of metro trains and will operate and maintain the Sydney Metro Northwest.

The works will include:

- Building eight new railway stations and 4,000 commuter car parking spaces
- Delivering Sydney's new generation of metro trains
- Building and operating the stabling and maintenance facility
- Installing 23km of new track and rail systems
- Converting the existing 13km Epping to Chatswood line to rapid transit status
- The operation and maintenance of the Sydney Metro Northwest
- Install a new power supply for the operation of the project between Willoughby to Chatswood.

3.3 Training and induction

All project inductions will incorporate a community and stakeholder management component. All employees, subcontractors and consultants will be required to attend the induction.

Community Place Managers will incorporate awareness of local stakeholders and community issues into the site-specific inductions.

The community and stakeholder management component of the induction will include the following information:

Our Approach

- We are part of a team with a long term interest in the successful delivery and operation of the Sydney Metro Northwest
- We are the third contractor – Sydney Metro Northwest has been engaging with the community for a number of years
- Successful community engagement is the responsibility of every member of our team
- Our focus is to minimise disruption and build positive relationships – our current neighbours are our future customers

Our Commitments

To deliver positive community outcomes we will:

- Consider the impact on the community in our decision making
- Be an active member of the community

Our Obligations

Community

- 24 hour enquiry and complaints line
- Response to enquiries and complaints within 2 hours
- 7 day notification prior to new works or traffic and pedestrian changes

Media and government

- No statements, written or verbal, or photos provided to any external contact without authorisation
- No social media posts, photos or comments about the project without authorisation
- Advise your Supervisor/Community Place Manager of any contact by media or elected representatives
- No media or elected representative on site without TfNSW approval

Our Behaviours

Behave appropriately:

- Drive safely and park appropriately
- Respect the neighbourhoods in which we work; they are not part of our worksite
- Be aware and considerate of our neighbours. No raised voices or loud music on site or during arrival and departure

If you're approached by a member of the community:

- Be polite and courteous
- Direct them to the Project Info Line – 1800 019 989
- Advise your Supervisor or Community Place Manager of any interaction with the community

The Sydney Metro Northwest Project contact information will be provided to onsite personnel for provision to the community and stakeholders as required.

Site inductions will be regularly updated to address any actions taken in response to stakeholder and community complaints and any changes to this Plan. Further inductions will be periodically undertaken for people who have been previously inducted. The stakeholder and community component of the induction will be submitted to TfNSW for approval.

3.4 Crisis communications

Crisis communication strategies to mitigate risks or incidents, which may attract the attention of the media, political or community interest groups, include:



- Maintaining a Project risk register that identifies issues or risks, potential impact, likelihood, mitigation strategies and recommendations
- Reviewing issues or risks in Sydney Metro Northwest and NRT interface meetings
- Having the NRT CEO act as a Project spokesperson, as required
- Facilitating regular crisis planning sessions to establish best practice procedures
- The definition of a crisis is detailed in Appendix C of the Incident Management Plan
- For managing on-site responses refer to the *Incident Management Plan* [[LINK PP22A-3.4-01](#)]

The following protocols will be implemented to ensure a coordinated approach in the event of a major incident:

- Ensure crisis communications procedures are aligned with Sydney Metro Northwest *Crisis Communications Management Plan* and parent company Crisis Communications Management Plans
- The Communications and Sustainability Manager, OpCo will provide immediate notification to the Deputy Project Director Stakeholder and Community Liaison of any incident or issue that may have an impact on the community, environment, personnel, subcontractors or other stakeholders or may attract the attention of the media, the Minister for Transport, a local MP, council or the broader community
- The Communications and Sustainability Manager, OpCo will obtain approval from the Deputy Project Director Stakeholder and Community Liaison before contacting or providing information to any person, other than that which is required to directly manage the incident or to comply with Law, including stakeholders, the media or the public
- NRT will make available suitably qualified and experienced personnel to support the Deputy Project Director Stakeholder and Community Liaison in responding to the community, the media and other stakeholders
- NRT will provide all necessary communications materials that may need to be disseminated as a result of such incidents.
- In the case of an incident that has attracted or can reasonably be expected to attract the attention of the media, the Minister for Transport, a local Member of Parliament, or the broader community, the Communications and Sustainability Manager, OpCo will notify the Deputy Project Director Stakeholder and Community Liaison within 10 minutes of the incident becoming known to the team.
- For any other incidents the Communications and Sustainability Manager, OpCo will notify the Deputy Project Director Stakeholder and Community Liaison within one hour of becoming aware of the incident.
- The Director General of the Department of Planning and Environment will be notified of an incident with significant off-site impacts on people or the environment within 48 hours and written details will be provided within seven days.

4 Enquiries and complaints management

An enquiries and complaints management handling procedure has been developed to ensure effective management of all project enquiries, complaints and feedback. This procedure is consistent with the requirements of TfNSW's Overarching Stakeholder and Community Involvement Plan, including SCL-05 construction complaint management system and the Project Deed.

Complaints may include any interaction with a stakeholder who expresses dissatisfaction with the project, policies, contractor's services, staff members, actions or proposed actions during the project.

NRT will attend to enquiries/complaints in a responsive and consistent manner to ensure feedback is considered and addressed in a timely and productive way. This will help ensure that the Project benefits from local input, and impacts on the community are minimised wherever possible.

Community enquiries and complaints will generally be received via:

- The Sydney Metro Northwest 24-hour telephone number: 1800 019 989
- The Sydney Metro Northwest email: trains@metronorthwest.com.au and/or info@metronorthwest.com.au

The 24-hour telephone number and email address are maintained by TfNSW who will notify NRT of all contact specific to the Project for investigation and response in accordance with required response timeframes. The phone number and email are included on all written project communications.

All calls to 1800 019 989 are answered and responded to 24 hours a day, seven days a week. A call centre reception service managed by TfNSW records contact details and information about the nature and location of the complaint. The complainant is advised that an on-call officer from NRT will contact them shortly to address the issue.

Members of the Communications and Stakeholder Relations team will be on a 24/7 on-call roster to respond to enquiries and complaints. The Community Place Manager will manage the ongoing communication with the complainant until they are satisfied with the actions taken to resolve the complaint.

In the event that a complainant remains unsatisfied, the complaint will be escalated to the Stakeholder Relations Manager or the Communications and Stakeholder Relations Manager. Complaints that cannot be resolved by NRT will be further escalated to the Independent Mediator for resolution. NRT will provide feedback on requests for information within two hours and will comply with all reasonable directions in relation to resolution of an escalated complaint.

NRT will also respond to enquiries and complaints received through letters mailed to the project team, during community information sessions and meetings or through construction/site staff.



Response management process and responsibility

Complaint and enquiry handling responsibilities will be undertaken as outlined below. The contact details for the personnel responsible for the management of complaints is provided to TfNSW via Team Binder and updated as required.

Table 2 Complaint and enquiry handling responsibilities

Complaint type	Responsibility
Complaint about OTS construction activities during business hours	Community Place Manager/Community Liaison Officer
Complaint about OTS construction activities after business hours	Rostered Community team member
Project-wide complaint	Stakeholder Relations Manager/Community Liaison Officer
Complaint about Sydney Metro Northwest works unrelated to OTS	TfNSW to refer relevant contractor
Complaints unrelated to Sydney Metro Northwest	NRT or TfNSW to refer to relevant organisation, if known

Contact response timeframes

All enquiries and complaints will be responded to in accordance with the Project Approval and the requirements of the Project Deed.

Details of each enquiry or complaint including how it was managed and closed out will be recorded in the Consultation Manager database within 24 hours. The Stakeholder Relations Manager will report details of any complaints received and how they were managed to TfNSW and the Environmental Representative by on a daily basis.

Table 3 Contact response times

Category	Response timeframe
Enquiries – telephone or in person	At least a verbal response within 2 hours unless agreed otherwise with enquirer
Enquiries – written (letter or email)	Written response within 24 hours
Complaints – telephone or in person	Commence investigation upon receipt; Verbal response within 2 hours on the action being undertaken to investigate and resolve complaint, unless agreed otherwise with enquirer
Complaints – emails	Verbal response within 2 hours if phone number is provided; written response within 4 hours during construction hours; and automated response to confirm receipt and written response within 4 hours next business day for written complaints received outside normal hours

Category	Response timeframe
Complaints – written (letter or fax)	Written response within 24 hours or verbal response within 2 hours if phone number provided
Record keeping – enquiries and complaints	<p>All enquiries and complaints recorded in Consultation Manager database within 24 hours</p> <p>Daily report provided to TfNSW and the Environmental Representative</p>



5 Stakeholder engagement

5.1 Approach

Community and stakeholder engagement activities and strategies for the SMTF and Tallawong Station sites will be informed by the design and delivery program.

Opportunities will be created to establish and build genuine relationships with stakeholders and the community to increase support and understanding of the Project and encourage community participation and ownership.

We will encourage community involvement and participation by being accessible and available to the community by maintaining a strong and visible presence within their neighbourhoods, and by tailoring our communications and the tools we use to the requirements of individual stakeholders and their circumstances.

NRT propose to evaluate stakeholder and community engagement by applying the ISCA rating tool. The measures will include opportunities for community feedback on selected draft stakeholder engagement strategies, with that feedback documented and used to guide completion of the final strategy. These opportunities will be identified in co-ordination with the community and business forums.

NRT will minimise, where possible, impacts on stakeholders and the community and ensure stakeholders and the community fully understand the activities to be undertaken, their objectives, benefits, potential impacts and expected outcomes.

Stakeholder and issue analysis

Local stakeholders have been segmented according to their relationship to the SMTF and Tallawong station worksites and their issues and expectations relating to NRT activities. In preparing this Plan a consolidated review of the Sydney Metro Northwest Consultation Manager database and site inspections were conducted to determine the stakeholder mix in the vicinity of the SMTF and Tallawong Station sites.

Additionally a review of publicly available information regarding the forward delivery and maintenance programs of government service providers/asset owners has been conducted to identify any other projects which may have the potential to create cumulative impacts.

Table 4 outlines the key stakeholders identified and the key strategies to keep them informed and engaged in the Project and to identify and address issues of concern.

Common communication tools that provide access and information to all project stakeholders regardless of their individual circumstances or requirements are not included in Table 4. These tools are described in Section 3.1.

The stakeholder listing and database will be continually reviewed and updated throughout the Project.

Table 4 Local stakeholder and issue analysis and communication activities

Stakeholder category	Specific stakeholder	Issues/interest in the project	Communication strategy and tools
Local Government	Blacktown City Council	<p>Impacts on local government assets and infrastructure</p> <p>Impacts on residents and businesses during construction</p> <p>Disruption to local roads, public transport and community facilities</p> <p>Station design and access arrangements</p> <p>Cumulative impacts with other projects/developments</p>	<p>Councillor briefings in coordination with TfNSW</p> <p>Regular meetings with officers regarding specific issues, project updates</p> <p>Provision of project communication material at Council offices</p>
Directly affected stakeholders	<p>Residential property owners and tenants within 500m of the project sites:</p> <p>Cudgegong Road</p> <p>Tallowong Road</p> <p>Macquarie Road</p> <p>Rouse Road</p> <p>Oak Street,</p> <p>Gordon Road</p> <p>Schofields Road</p> <p>The Ponds Estate (between Greenview Parade and Schofields Road)</p>	<p>Construction impacts - noise, vibration, dust, visual amenity, traffic and local access changes</p> <p>Work hours and site access routes</p> <p>Potential for property damage caused by construction</p> <p>Station design and access arrangements</p> <p>SMTF layout and location of maintenance facilities</p>	<p>Individual meetings, doorknocks, regular progress updates, notifications and newsletters</p> <p>Verbal, electronic and social media updates</p> <p>Site tours and community forums</p> <p>Property condition surveys</p>



Stakeholder category	Specific stakeholder	Issues/interest in the project	Communication strategy and tools
Educational and early learning	Rouse Hill Anglican College	Safety of school community Changes to pedestrian access and local roads Impact on school operations/clash with exams Construction impacts – noise, vibration, dust Worksite safety and construction traffic on local roads General interest in the project	TfNSW schools education program Meetings, notifications, newsletters, telephone hotline, website Site signage and pedestrian/vehicle safety signage
Religious/places of worship	Lankarama Buddhist Vihara	Working hours during services Changes to local traffic access and parking Potential damage to property and church assets	Meetings, notifications, telephone hotline, project website Property condition survey Site signage and pedestrian/vehicle safety signage
Other major projects/cumulative impacts	Schofields Road upgrade (RMS) Interfaces with SVC contractor North West Urban Transformation Program (UrbanGrowth NSW) Residential estate developments (Dept of Planning and private developers)	Minimising cumulative impacts Coordination of activities Coordination of public information and management of enquiries/complaints Interface with SVC and RMS contractors Interface with property developers	Communication Management Control Group Transport and Traffic Liaison Group Regular stakeholder meetings Regular exchange and coordination of information

Table 5 Indicative construction timeline

Tallawong Station

*Timeframes/dates are indicative only and subject to change. Forward programs will be regularly reviewed to ensure communication requirements are met.

Year	2014		2015				2016				2017				2018				2019				
Quarter	3	4	1	2	3	4	1	2	3	4	1	2	3	4	1	2	3	4	1	2	3	4	
Site establishment			●	●	●	●																	
Temporary closure Tallawong Road				●	●	●	●	●	●	●	●												
Earthworks and foundations							●	●	●														
Lower ground service building							●	●	●	●	●	●	●	●									
Construct and fitout station concourse							●	●	●	●	●	●	●	●	●	●							
Pedestrian Bridge and Precinct Street C Bridge								●	●	●	●	●	●	●	●	●	●						
Station Platform									●	●	●	●	●	●	●	●	●						
Construct and fitout primary plaza								●	●	●	●	●	●	●	●	●	●						
Construct and complete car park and precinct roads								●	●	●	●	●	●	●	●	●	●						
Construct Tallawong Road overbridge and new road alignment						●	●	●	●	●	●	●	●	●	●	●	●						
Temporary closure Cudgegong Road											●	●	●	●	●	●	●						
Construction Cudgegong Bridge and utility installation										●	●	●	●	●	●	●	●						



Tallawong Station

**Timeframes/dates are indicative only and subject to change. Forward programs will be regularly reviewed to ensure communication requirements are met.*

Year	2014		2015				2016				2017				2018				2019				
Quarter	3	4	1	2	3	4	1	2	3	4	1	2	3	4	1	2	3	4	1	2	3	4	
Testing and commissioning													●	●	●	●	●	●	●				

Sydney Metro Trains Facility

*Timeframes/dates are indicative only and subject to change. Forward programs will be regularly reviewed to ensure communication requirements are met.

	2014		2015				2016				2017				2018				2019				
Quarter	3	4	1	2	3	4	1	2	3	4	1	2	3	4	1	2	3	4	1	2	3	4	
Site establishment			●	●	●																		
Site prep – earth and civil			●	●	●	●																	
Clear and grubbing				●																			
Commence bulk earthworks				●	●	●																	
Demolition of existing buildings				●																			
Temporary closure Tallawong Road				●	●	●	●	●	●	●													
Piling works and service installation					●	●	●	●	●	●													
Construction of retaining walls					●	●	●	●	●	●													
Building construction						●	●	●	●	●	●	●	●	●	●								
Rail systems commence							●	●	●	●	●	●	●	●									
Ballasted track install							●	●	●	●	●	●	●	●									
Tamping and track alignment							●	●	●	●	●	●	●	●									
OHW installation									●	●	●	●	●	●									
Internal road construction								●	●	●	●	●	●	●	●	●	●	●					
Landscaping									●	●	●	●	●	●	●	●	●	●					
Building fitout and commissioning								●	●	●	●	●	●	●									
Signalling									●	●	●	●	●	●									
Testing and commissioning												●	●	●	●	●	●						



5.2 Implementation Plan

The following Implementation Plan provides a program of communication activity linked to the construction staging programs for the SMTF and Tallawong Station sites.

In addition to the actions nominated below, NRT will keep the community informed of project progress and ongoing activities through the implementation of the communication tools identified in Table 3, including but not limited to monthly email updates, quarterly newsletters, regular doorknocks, and website updates. Where required tailored, communication and/or consultation strategies will be developed for specific activities or phases of work. The strategies will be developed in consultation with TfNSW, to identify opportunities for community involvement and ensure effective communication with stakeholders.

The Implementation Plan is designed to be flexible and will be updated regularly to reflect Project status and anticipate upcoming activities.

Table 6 Stakeholder and community liaison implementation plan

**Timeframes/dates are indicative only and subject to change. Forward programs will be regularly reviewed to ensure communication requirements are met.*

Timing	Project activity/issue	Communication/mitigation action	Stakeholder	Resources/ approvals	Implementation
Q3 2014	Preliminary site investigations	Community notifications	Residents of Tallawong Road, Cudgegong Road, Oak Street	Communications and Stakeholder Relations Manager	7 days prior to activities
	Project Deed requirements	Submit CLIP and SMTF & Cudgegong Road SCIP	TfNSW	Communications and Stakeholder Relations Manager	12 Dec 2014
Q1/2/3/4 2015	Site establishment, hoardings, and establishment of environmental controls	Community notification Site Banner/signage installed Site specific construction newsletter Door knock meetings with immediate neighbours Community forums	Local community within 500m radius of site – Tallawong Road, Cudgegong Road, Oak Street, Schofields Road Rouse Hill Anglican College Lankarama Buddhist	Stakeholder Relations Manager	7 days prior to activities Site establishment Quarterly 7 days prior to activities

Timing	Project activity/issue	Communication/mitigation action	Stakeholder	Resources/ approvals	Implementation
		Email update	Vihara		Quarterly Monthly
Q2 2015 – Q1 2017	Temporary closure Tallawong Road	Briefing for Traffic and Transport Liaison Group Council briefing Traffic alert/VMS or other signage Doorknock Tallawong and Cudgegong Road neighbours Community notification Bus stop notices	TTLG members Blacktown City Council Travelling public, pedestrian, cyclist Local community within 500m radius of site Bus users Rouse Hill Anglican College	Traffic Manager Stakeholder Relations Manager	Monthly Dec 2014/Feb 2015 7 days prior to activities 7 days prior to activities 7 days prior to activities/ monthly updates 7 days prior to activities
Q2 2015 – Q1 2018	Utility works on Tallawong Road and Cudgegong Road	Directional signage when footpaths disrupted Community notification	Pedestrians Local community	Traffic Manager Stakeholder Relations Manager	7 days prior to activities 7 days prior to activities/ monthly updates
Q4 2015 – Q1 2018	Piling works for station, overbridge and concourse abutments, retaining walls	Community notification Community forums Stakeholder meetings Email update	Local community within 500m of site	Stakeholder Relations Manager	7 days prior to activities/ monthly updates Quarterly As required/requested Monthly
Q1 2016	Commence rail systems install and precinct infrastructure	Community notification Community forums Stakeholder meetings Email updates	Local community within 500m of site	Community Place Manager	7 days prior to activities/ monthly updates As required/requested Monthly



Timing	Project activity/issue	Communication/mitigation action	Stakeholder	Resources/ approvals	Implementation
Q2 2015 – Q1 2017	Construct Tallawong Road overbridge and new road alignment	Community notification Community forums Stakeholder meetings Email updates	Local community within 500m of site	Community Place Manager	7 days prior to activities/ monthly Quarterly As required/requested Monthly
Q4 2016 – Q3 2018	Temporary closure Cudgegong Road	Briefing for Traffic and Transport Liaison Group Council briefing/meetings Traffic alert/VMS or other signage Doorknock Tallawong and Cudgegong Road neighbours Community notification Bus stop notices Email updates	TTLG members Blacktown City Council Travelling public, pedestrian, cyclist Local community within 500m radius of site Bus users Rouse Hill Anglican College	Traffic Manager Community Place Manager	Monthly Ongoing 7 days prior to activities 7 days prior to activities 7 days prior to activities 7 days prior to activities Monthly
Q1 2016 – Q1 2018	Station building fitout, car park, landscaping SMTF internal road construction, building fit out, landscaping	Community notification Community forum Stakeholder meetings Email updates	Local community within 500m radius	Community Place Manager	7 days prior to activities Quarterly As required/requested Monthly
Q3 2017 – Q1 2019	Testing and commissioning	Community notification Community forum	Local community within 500m radius	Community Place Manager	7 days prior to activities Quarterly

6 Evaluation and reporting

6.1 Monitoring and evaluation

NRT will undertake the ongoing development, amendment and updating of the CLIP to ensure it remains consistent with project priorities, risk management, client requirements and project objectives.

Lessons learnt will be captured using event reviews and regular feedback from stakeholders and used to improve the approach to stakeholder management.

Plan Reviews

This plan will be updated biannually during the Delivery Phase in accordance with the requirements of *OTS Project Deed, Operations, Trains and Systems, Exhibit 1, Scope and Performance Requirements, Appendix 54 – Project Plan Requirements, Table 1 [LINK PP22A-6.1-01]*, or where reasonably requested by TfNSW's Representative or any Authority.

NRT will undertake the ongoing development, amendment and updating of the SCIP to ensure it remains consistent with project priorities, risk management, client requirements and project objectives, taking into account:

- Effectiveness of processes and procedures for responding to enquiries and complaints (for example response times, resolution of issues, and record keeping)
- Effectiveness of the chosen communication and engagement tools and activities
- Success of resolving issues and avoiding negative impacts
- Lessons learnt during delivery
- Requirements and matters not covered by the existing project plans
- Changes to plans as directed by TfNSW's Representative under the Deed

Surveys and evaluation

Feedback will be sought at appropriate times in the Project life through client satisfaction surveys. The process for organising, conducting the surveys will be agreed with TfNSW as per the *Project Management Plan [LINK PP22A-6.1-02]*. Feedback relating to community and stakeholder issues will be incorporated into updates of the SCIP.

NRT propose to evaluate stakeholder and community engagement by applying the Infrastructure Sustainability Council of Australia (ISCA) *Infrastructure Sustainability Rating* tool.

These measures include the following:

Sta-1: Stakeholder engagement strategies

- A comprehensive stakeholder engagement strategy is developed



- The strategy is independently reviewed
- The strategy is implemented and formal monitoring, evaluation and corrective action is undertaken
- The community is informed of the draft strategy and provided an opportunity to give feedback. Community feedback is documented and used to guide completion of the final strategy.

Sta-2: Level of engagement

- Negotiable issues are identified and the level of participation on these issues is at least 'involve' or higher on the IAP2 spectrum
- Stakeholders are informed about non-negotiable issues

Sta-3: Effective communication

- The community has been provided with information that:
 - Was provided in a timely manner
 - Was objective
 - Supported community participation
 - Was meaningful and relevant
 - Was accessible; and
 - The above has been verified by an internal audit.

Sta-4: Addressing community concerns

- Community concerns have been considered and addressed and this has been verified by an internal audit.

Audits

The implementation of the CLIP will be subject to NRT internal audits, including audits of subcontractors and suppliers, and TfNSW audits. Audit reports will be a key input into the review and improvement of the SCIP.

Lessons learnt

Lessons learnt will be captured using event reviews and regular feedback from stakeholders and used to improve the approach to stakeholder management.

6.2 Reporting

Table 7 Reporting methods

Document	Frequency	Contents
Consultation Manager	Daily	All enquiries and complaints recorded in Consultation Manager within 24 hours (1 business day)
Complaints report	Daily	Details of complaints received, including response times and details of actions reported to TfNSW, ER, EPA
Consultation activity reports	Weekly	Weekly consultation report provided by Community Place Managers to Stakeholder Relations Manager outlining complaints, consultation activities and communication distributions
Media articles	Daily	Recorded in database.
Monthly Project Reports	Monthly	<p>The report will address:</p> <ul style="list-style-type: none"> Executive summary Performance against requirements of the Deed Stakeholder and community enquiries Media or government enquiries Stakeholder and community complaints Media and government enquiries Crisis communications Meetings and presentations Summary of feedback from displays and community and business forums Notifications Future events
Project Plan review	Quarterly	Review and update of this Stakeholder and Community Involvement Plan



Appendix A. Definitions

Abbreviation/
Acronym/
Term

Definition

Abbreviation/ Acronym/ Term	Definition
ANZ	Australia and New Zealand businesses
BMP	Business Management Plan
BMS	Business Management strategy
CAP	Communication Action Plan
CEMP	Construction Environment Management Plan
CLIP	Community Liaison Implementation Plan (Delivery)
ECRL	Epping to Chatswood Rail Link
EIS	Environmental Impact Statement
ETTT	Epping to Thornleigh Third Track Alliance
ICN	Industry Capability Network NSW
IPP	Industry Participation Plan
ISCA	Infrastructure Sustainability Council of Australia
MCoA	Ministers Conditions of Approval
NRT	Northwest Rapid Transit
NWRL	North West Rail Link (<i>now known as 'Sydney Metro Northwest'</i>)
OSCIP	Overarching Stakeholder and Community Involvement Plan (TfNSW)
OTSPPP	Operations, Trains and Systems Public Private Partnership
PCM	Precinct Communications Manager
RHTC	Rouse Hill Town Centre
SCIP	Stakeholder and Community Involvement Plan
SCIPO	Stakeholder and Community Involvement Plan – Operations
SME	Small and medium sized enterprises
SVC	Surface and Viaducts
TSC	Tunnels and Station Civil
SMTF	Sydney Metro Trains Facility [<i>formerly known as 'Rapid Transit Rail Facility (RTRF)'</i>]

*Definitions in the OTS Project Deed apply in this Community Liaison Implementation Plan unless the relevant term is defined in this Community Liaison Implementation Plan

Appendix B. Business Management Strategy

Introduction

As part of the Project, a new station will be built near Cudgegong Road and a Sydney Metro Trains Facility (SMTF) will be constructed on the site bounded by Tallawong Road, Schofields Road, First Ponds Creek and Oak Street. The SMTF will be a specialised train stabling and maintenance facility with capacity to stable 20 trains when the project opens in 2019.

Tallawong Station is located slightly north of the intersection of Cudgegong Road and Schofields Road, Rouse Hill. The SMTF is located on a 35.48 hectare site, in an area that has been re-zoned for railway purposes and light industrial uses.

The areas bordering the site north of Schofield's Road consist of predominantly semi-rural residential properties with some utilities infrastructure nearby. The properties are generally widespread on large acreages.

The Ponds housing estate is being established to the south of Schofield's Road. This is a densely populated residential estate with adjacent developments being established to the west.

The nearest sensitive receivers are the Rouse Hill Anglican College and the Lankarama Buddhist Vihara in Oak Street.

Business identification

In preparing this Plan a consolidated review of the Sydney Metro Northwest Consultation Manager database and site inspections were conducted to determine the stakeholder mix in the vicinity of the SMTF and Tallawong Station sites.

There are no currently identified businesses in the immediate vicinity of the location of the SMTF or Tallawong Station sites. There are no identified businesses on the local roads which will be used as access routes to/from the worksites.

Monitoring and evaluation

NRT will continue to monitor the local area and consult with Blacktown City Council and other project stakeholders to identify any new businesses which may commence trading during the delivery phase. In the event a new or a previously unidentified business is identified, NRT will develop a business management strategy to ensure that construction impacts are minimised and specific measures are put in place to mitigate the effect on the business.

The business management strategy (if required) will be developed in accordance with the nine step process identified in the *Community Liaison Implementation Plan (CLIP)*.



Appendix C. Enquiry and Complaints Process

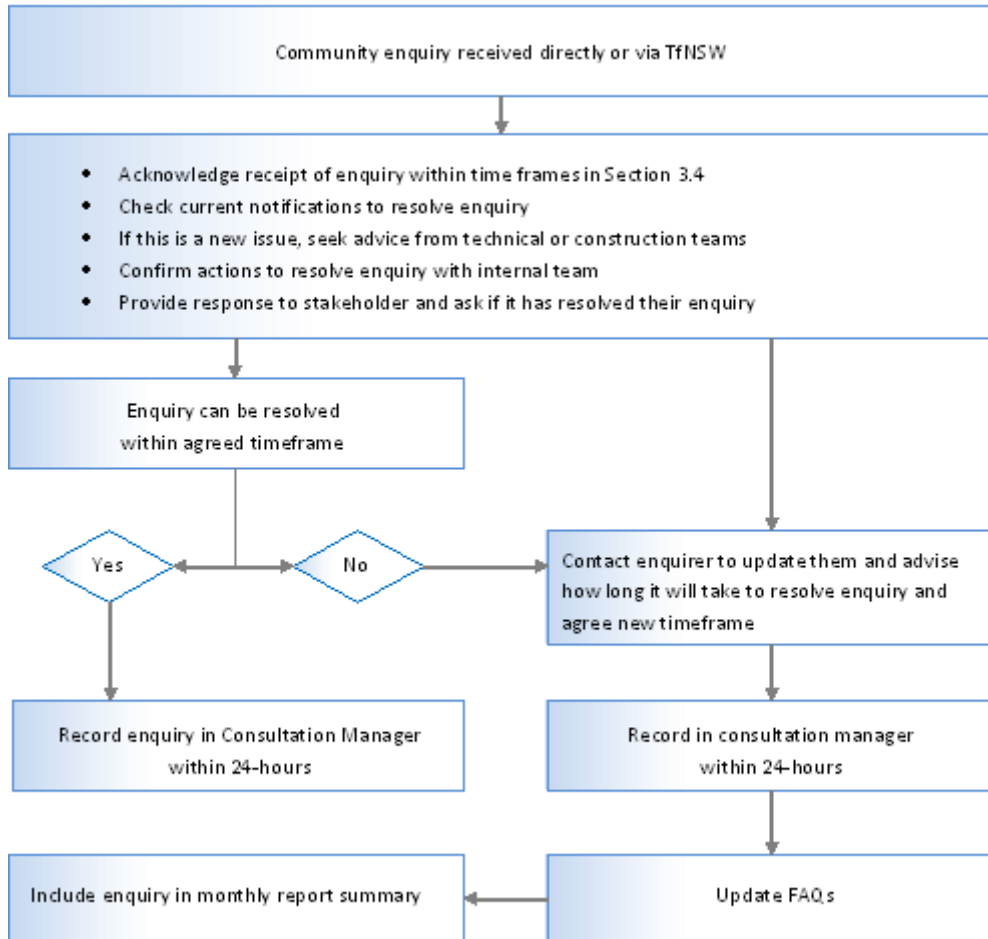


Figure 2 Enquiry Management Process

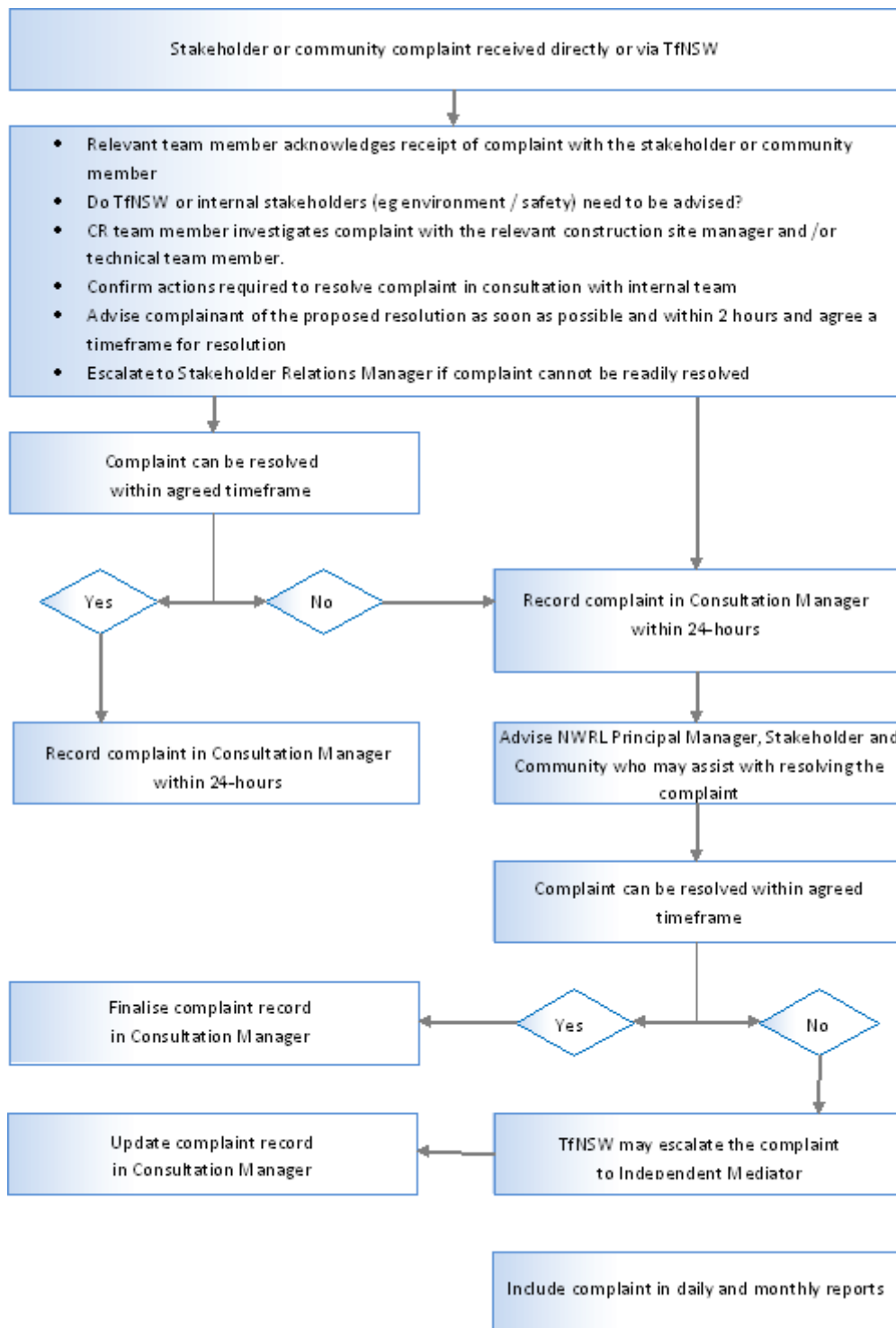


Figure 3 Complaint Management Process